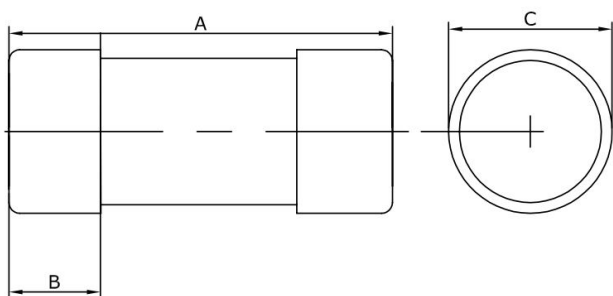




AC3250

60A ME Fuse

22.23 x 57mm, 415V, ASTA 20 Certified



Technical Specification	
Voltage (V)	415
Rating (A)	60
Standards	BS1361, IEC60269-2
Size	22 x 57
Dimensions (mm)	57 (A) x 16 (B) x 22.23 (C)
Pre Arcing I ² t (Ampere ² seconds)	2100
Total I ² t (Ampere ² seconds)	19200
Watt Loss	4.8

3-AC3250-2021-V1