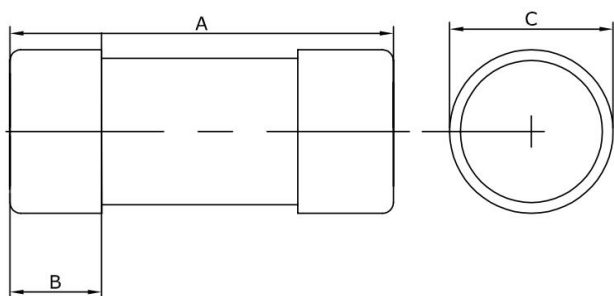




### AC3251

### 80A ME Fuse

22.23 x 57mm, 415V, ASTA 20 Certified



Technical Specification	
Voltage (V)	415
Rating (A)	80
Standards	BS1361, IEC60269-2
Size	22 x 57
Dimensions (mm)	57 (A) x 16 (B) x 22.23 (C)
Pre Arcing I <sup>2</sup> t (Ampere <sup>2</sup> seconds)	4000
Total I <sup>2</sup> t (Ampere <sup>2</sup> seconds)	30000
Watt Loss	5.6

3-AC3251-2021-V1