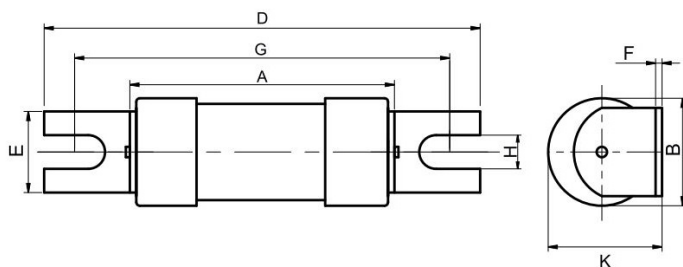




### AC3305

### 32A NIT Fuse

550V AC 80kA / 250V DC 40kA, Fixing centres: 44.5mm / Diameter: 13.5mm (Size A1), ASTA 20 Certified



Technical Specification	
Voltage (AC/DC)	550/250
Rating	32A
Breaking Capacity	40 kA
Dimensions (mm)	35.5 (A) 13.5 (B) 56 (D) 11.2 (E) 0.8 (F) 44.5 (G) 4.8 (H) 14.5 (K)
Pre Arcing I <sup>2</sup> T (AMPERE <sup>2</sup> SECONDS)	670
Total I <sup>2</sup> T (AMPERE <sup>2</sup> SECONDS)	3350
Watt Loss	2.9
Curve Type	gG

3-AC3305-2021-V1